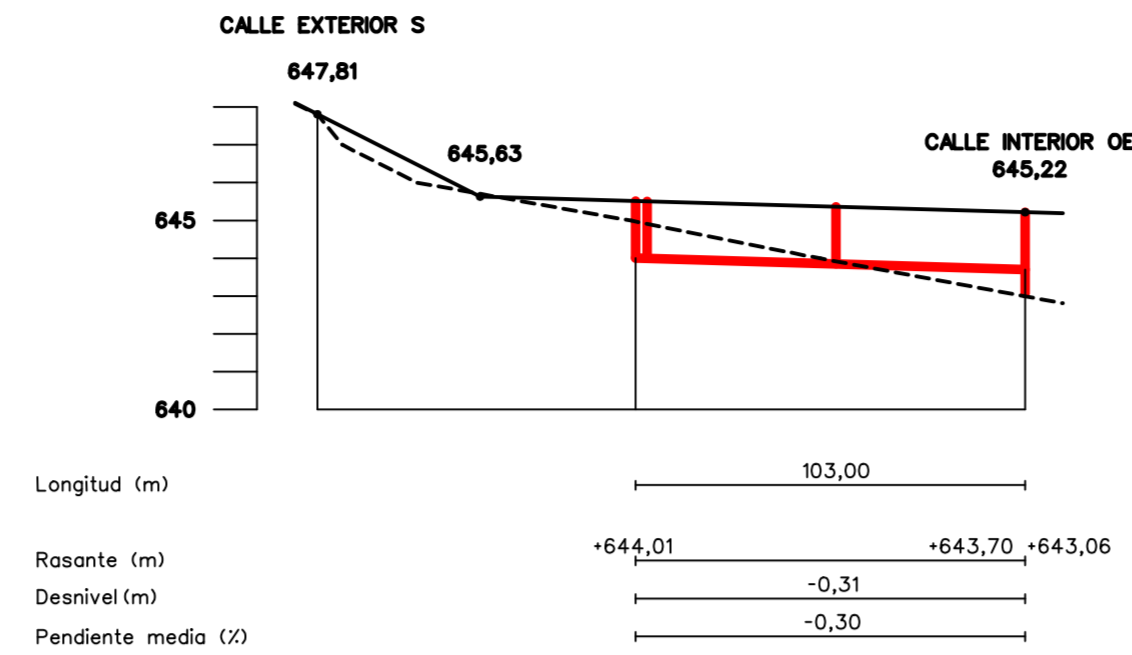
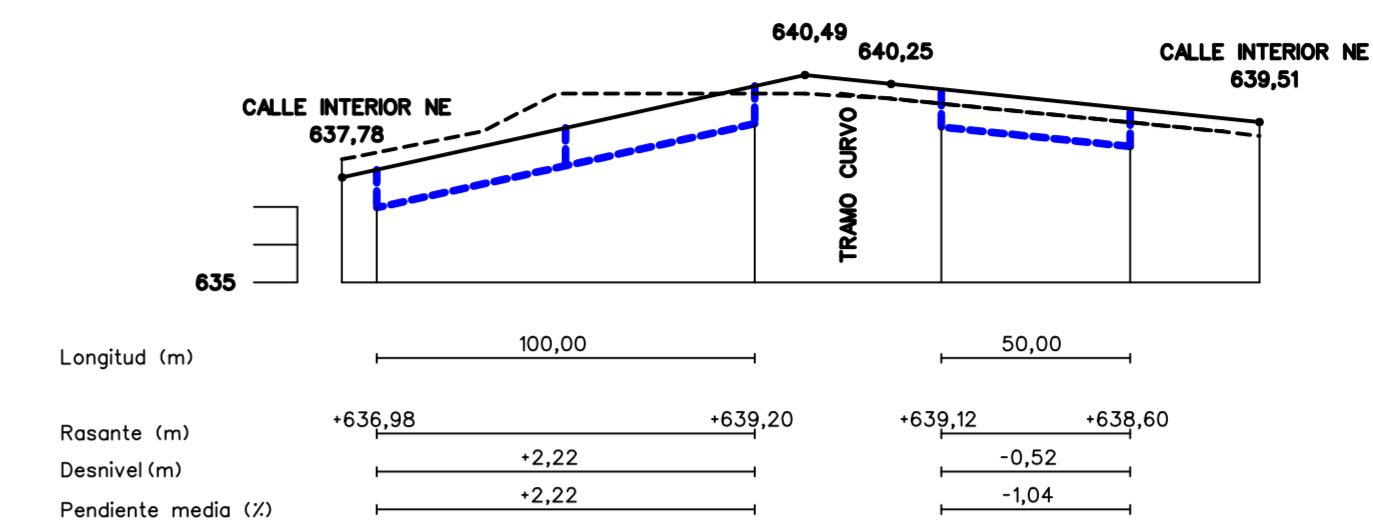


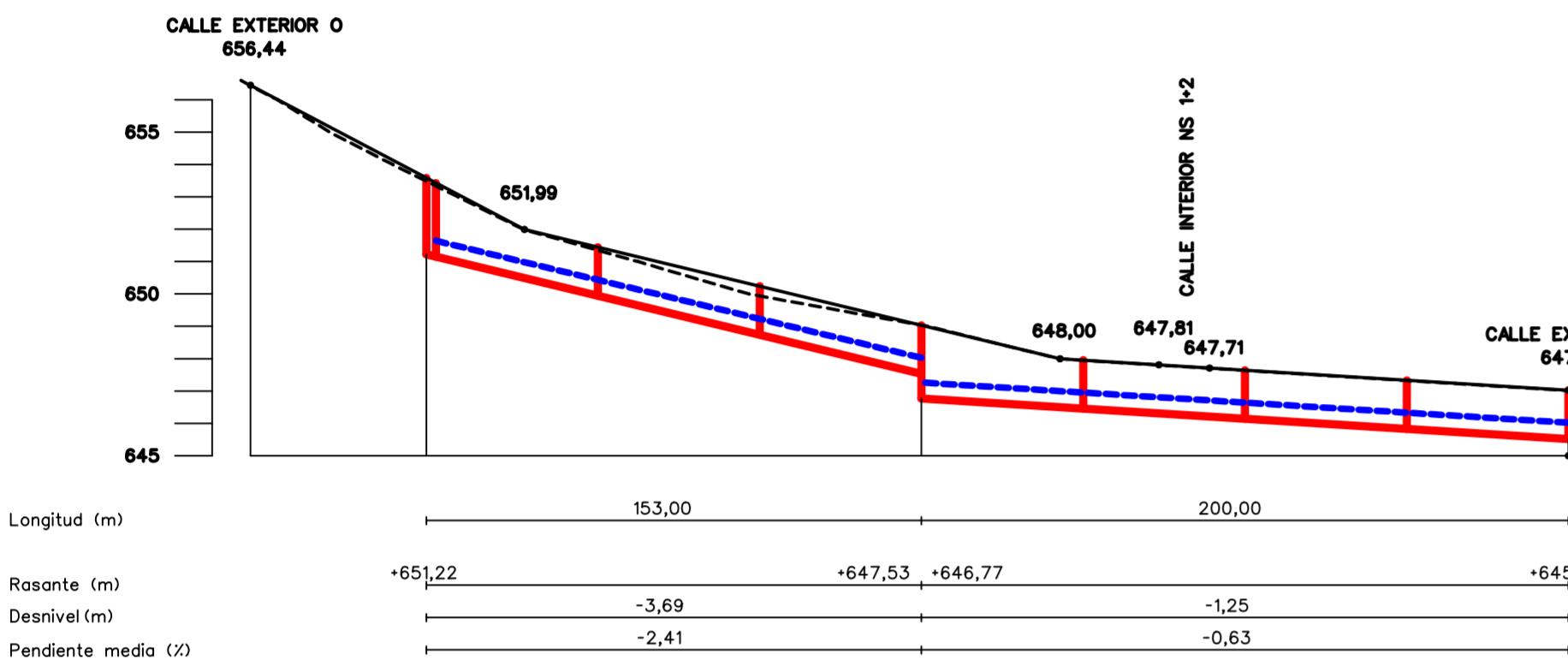
Calle N (eje)



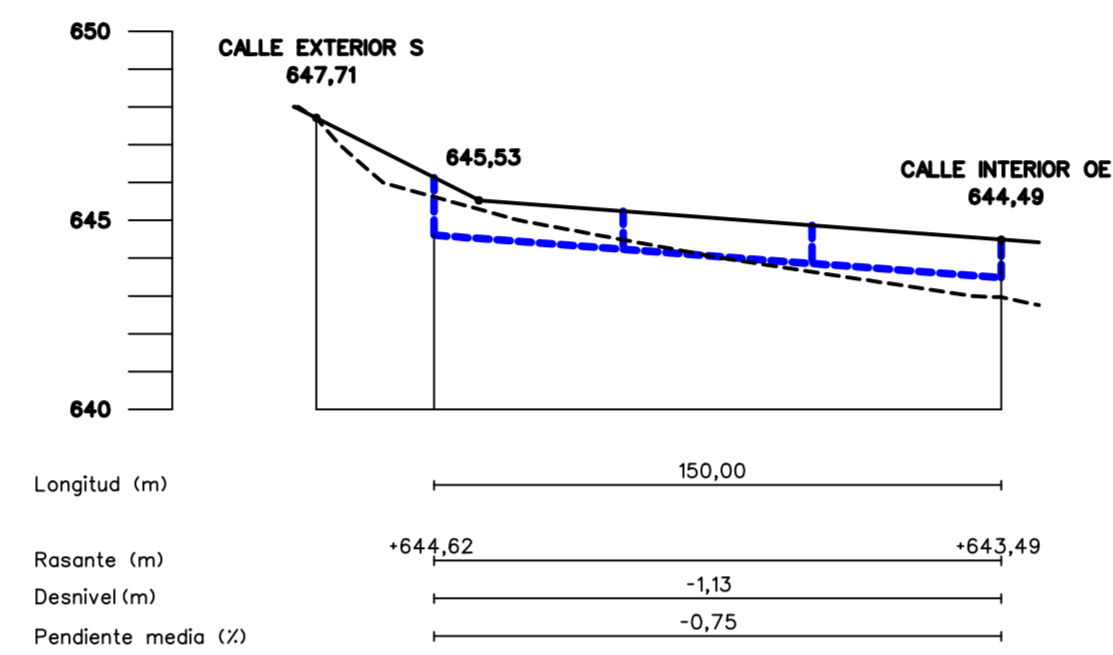
Calle NS-1 (eje)



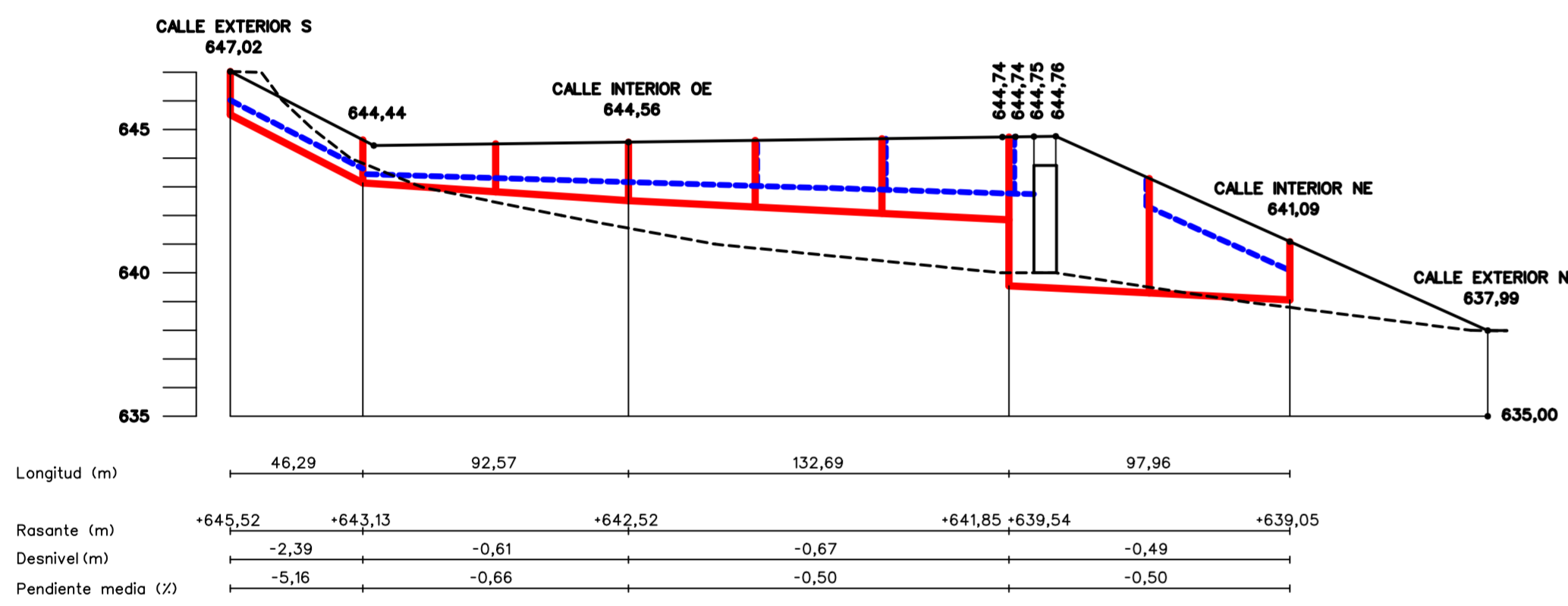
Aparcamiento NE (eje)



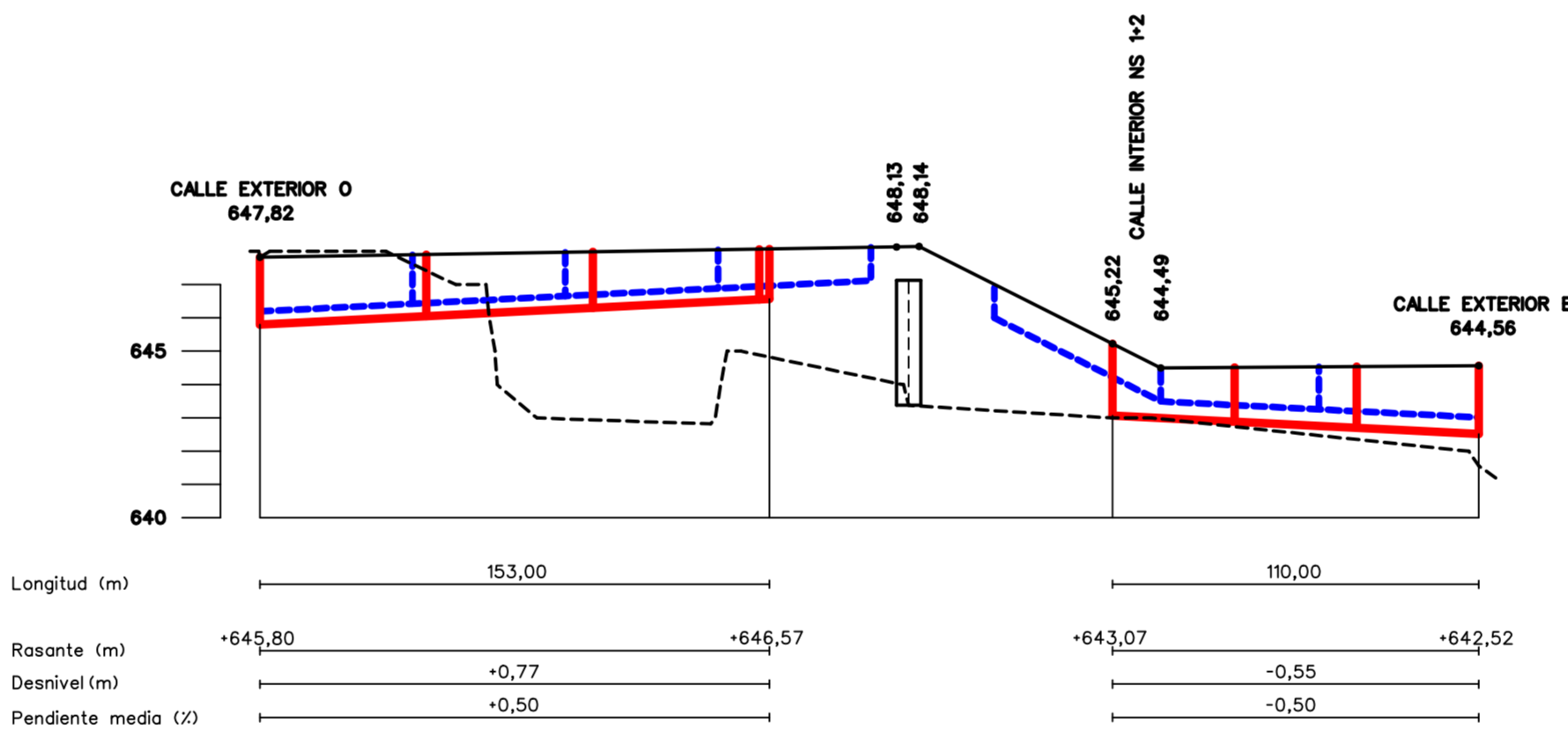
Calle S (eje)



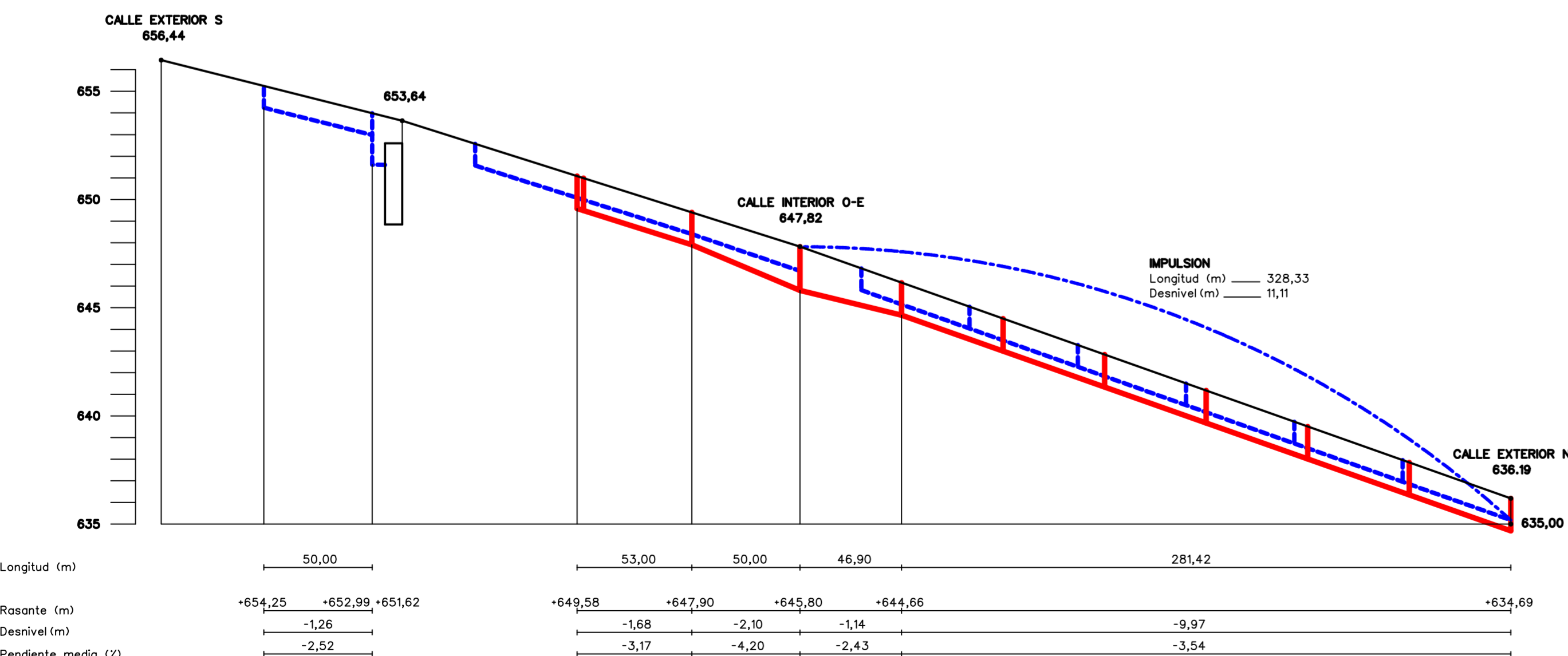
Calle NS-2 (eje)



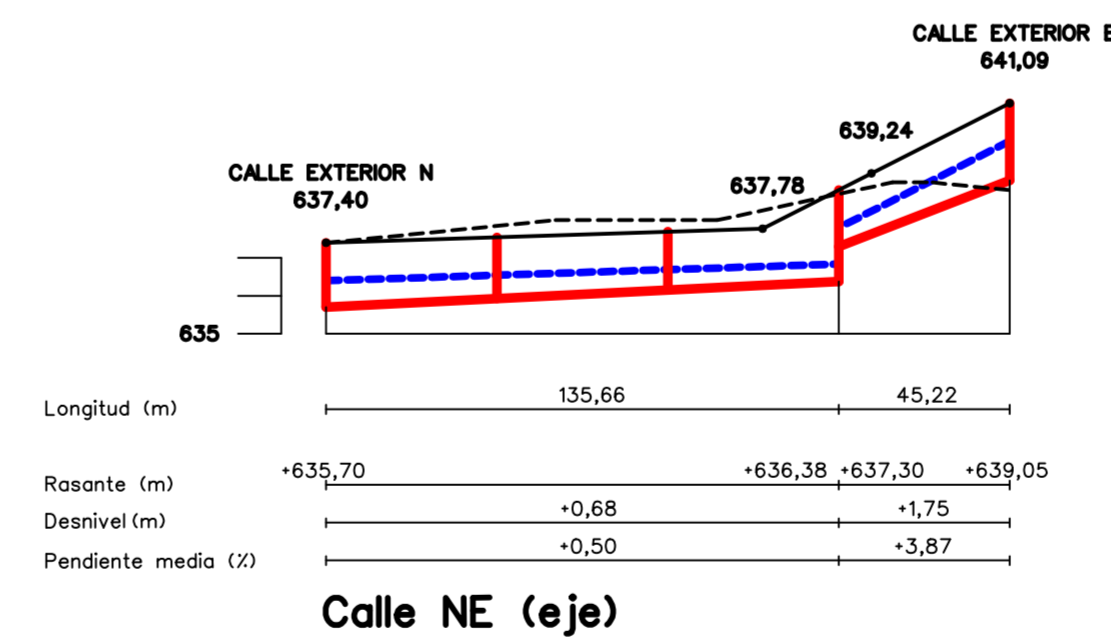
Calle E (eje)



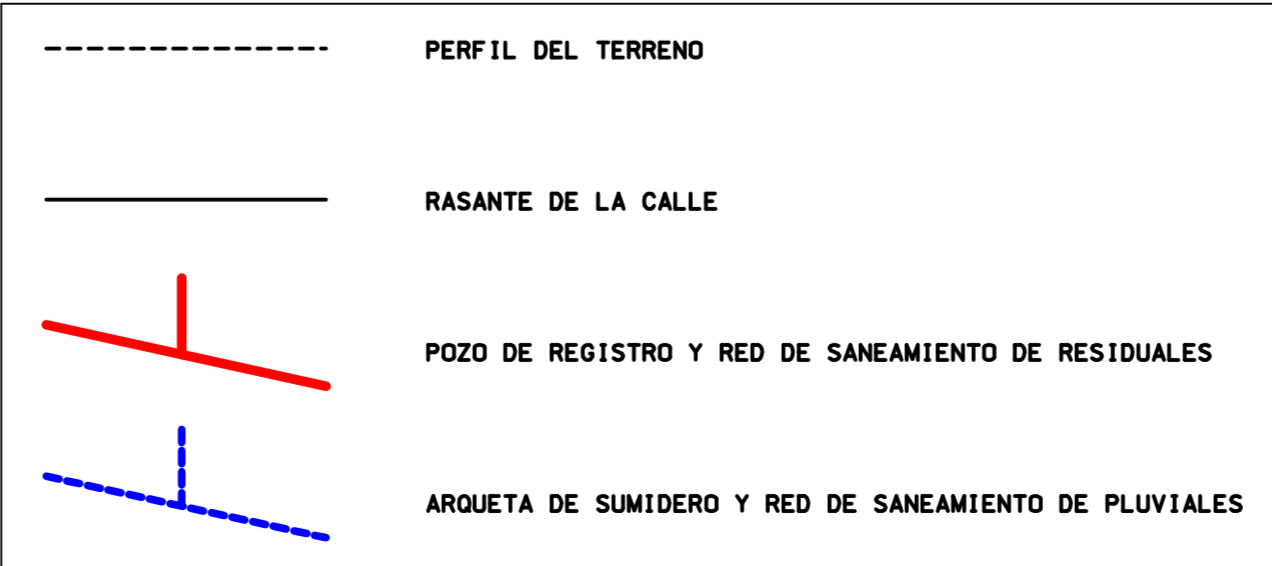
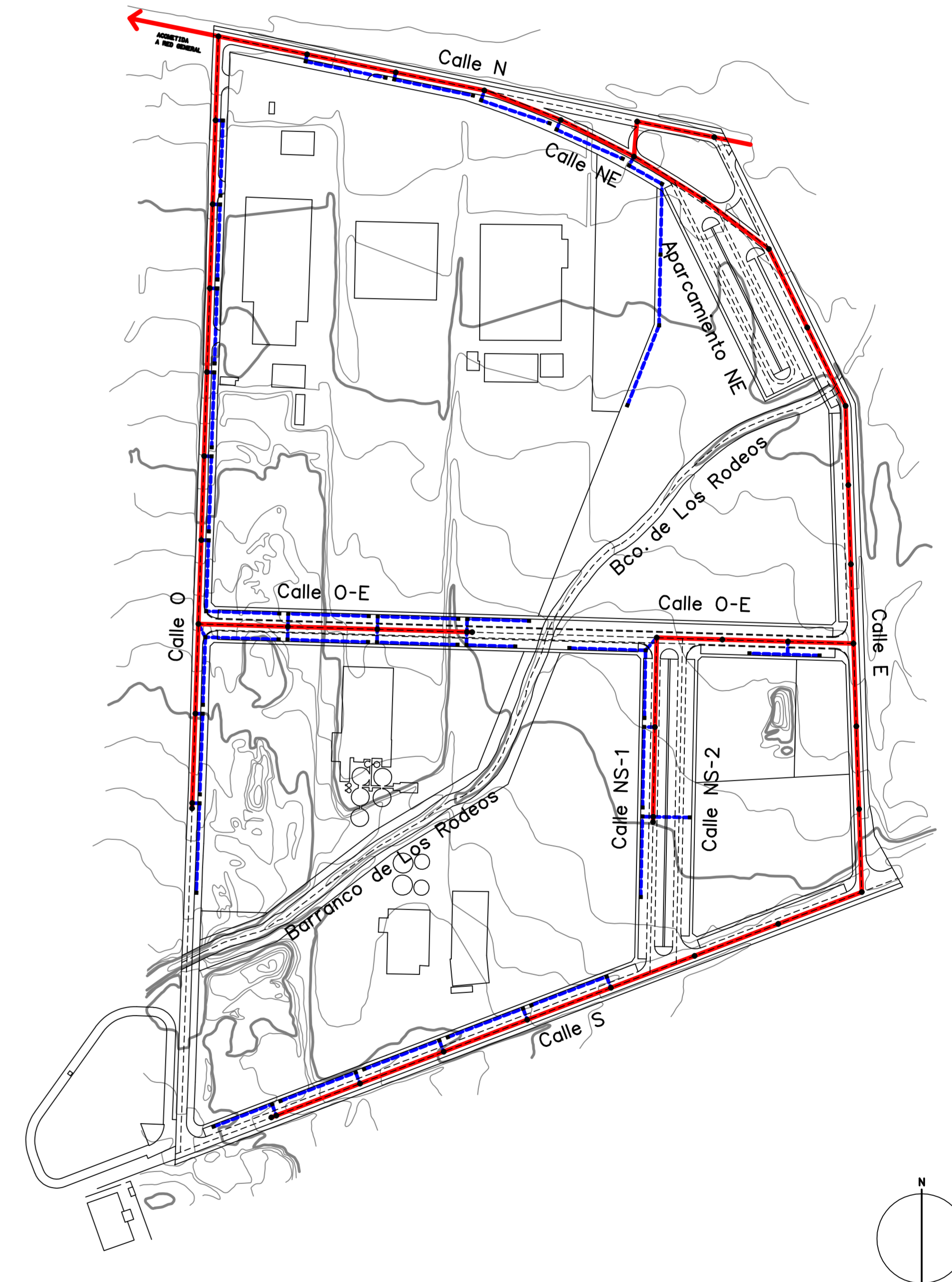
Calle OE (eje)



Calle O (eje)



Calle NE (eje)



EXCMO. AYUNTAMIENTO DE SAN CRISTOBAL DE LA LAGUNA
 GESTION URBANISTICA DE SANTA CRUZ DE TENERIFE, S.A.
 PROYECTO: PLAN PARCIAL DEL SECTOR GUAMASA-3
 LOCALIDAD: SAN CRISTOBAL DE LA LAGUNA

DOCUMENTO PARA APROBACION DEFINITIVA

ARQUITECTO: FERNANDO PUELLES LOPEZ CASTILLO, 62, 2º. S/C DE TENERIFE. TFNO 928-240282 EXPEDIENTE: 3/2008
 PLANO: SANEAMIENTO PERFILES LONGITUDINALES PLANO Nº: 17 FECHA: FEBRERO 2008 ESCALAS: H= 1:8.000 V= 1:800